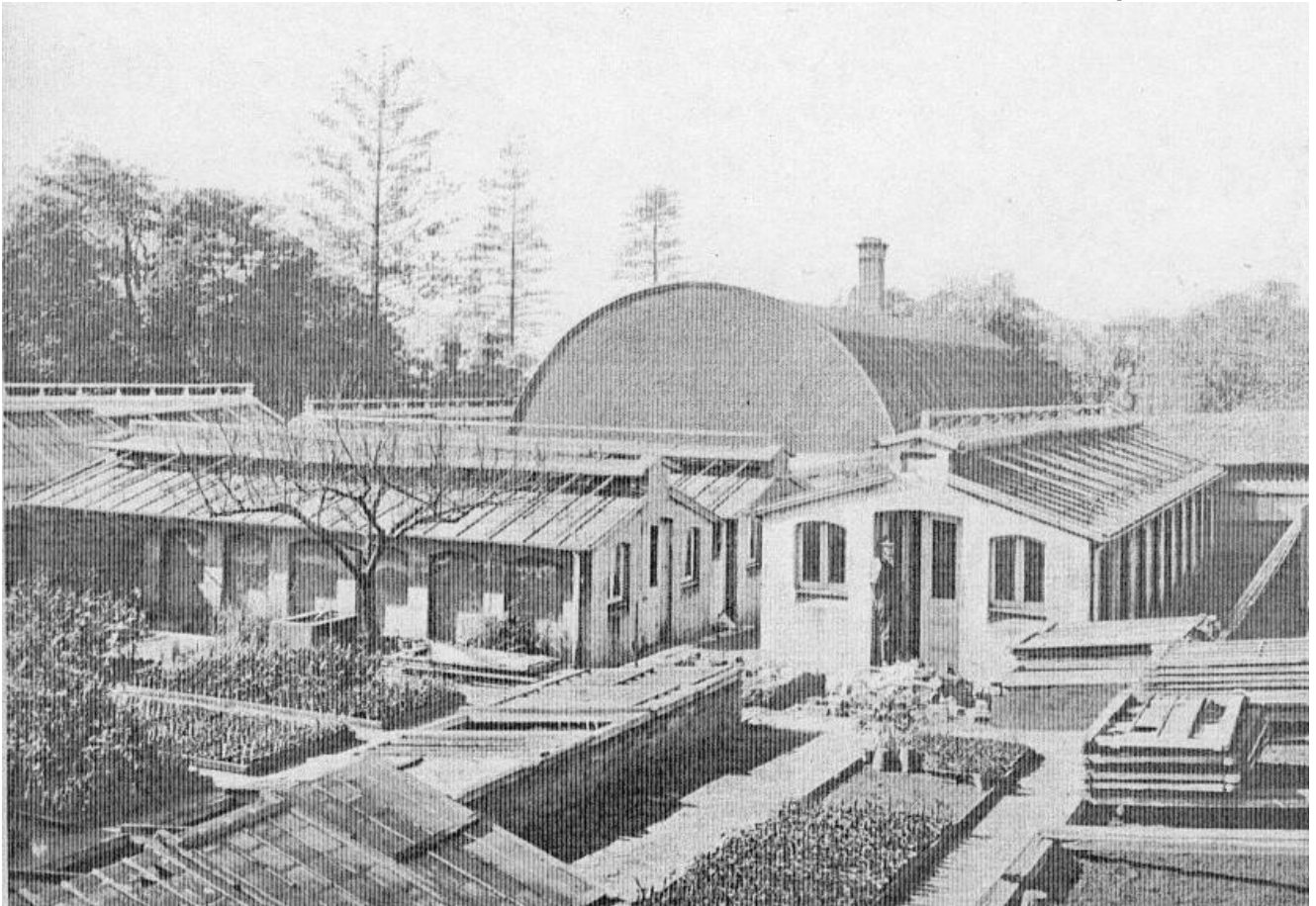


Clive Lucas, Stapleton & Partners Pty Ltd

ARCHITECTS &
HERITAGE CONSULTANTS

CENTRAL DEPOT ROYAL BOTANIC GARDENS, SYDNEY CONSERVATION MANAGEMENT PLAN

*The 1908 Orchid House (right), the two 1908
Propagation Houses (left) and the barrel-roofed 1888
Bush House (centre).
(Source: Botanic Gardens Annual Report, 1915)*



Name: Central Depot

Address: Royal Botanic Gardens, Sydney

Client: The Royal Botanic Gardens and Domain Trust *Date:* November 2005

Description: The Central Depot of the Royal Botanic Gardens contains an assortment of glasshouses and utilitarian brick buildings from the late 19th and early 20th centuries. It is the main working area for the Gardens where plants are propagated and cultivated, materials and vehicles are stored and staff facilities are located.

The Conservation Management Plan (CMP) was prepared for the Trust as the heritage input to the Central Depot master planning process.